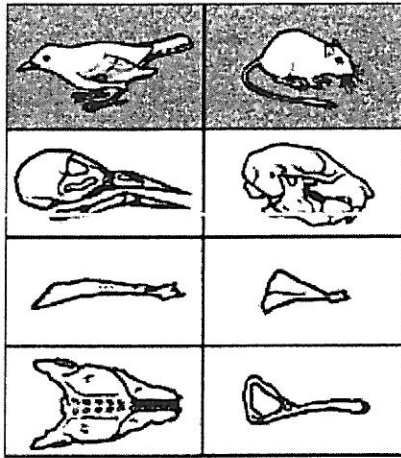


What did the owl have for dinner?



Did you know that you can determine what an owl has eaten by analyzing its pellet? Pellet is a scientific term for the indigestible material an owl coughs up. Pellets contain animal remains such as bones, hair, shells and other items.

The illustration below shows the bones from a pellet that has been picked apart for you. It is your mission to count the number of pelvises, scapula and skulls. Use the key to help you determine whether each bone belongs to a bird or rodent. Write these numbers in the table below to find out how many of each the owl had for dinner.

	# counted	#consumed
bird skull		÷2 = _____
bird scapula		
bird pelvises		
rodent skulls		÷2 = _____
rodent scapula		
rodent pelvises		÷2 = _____

