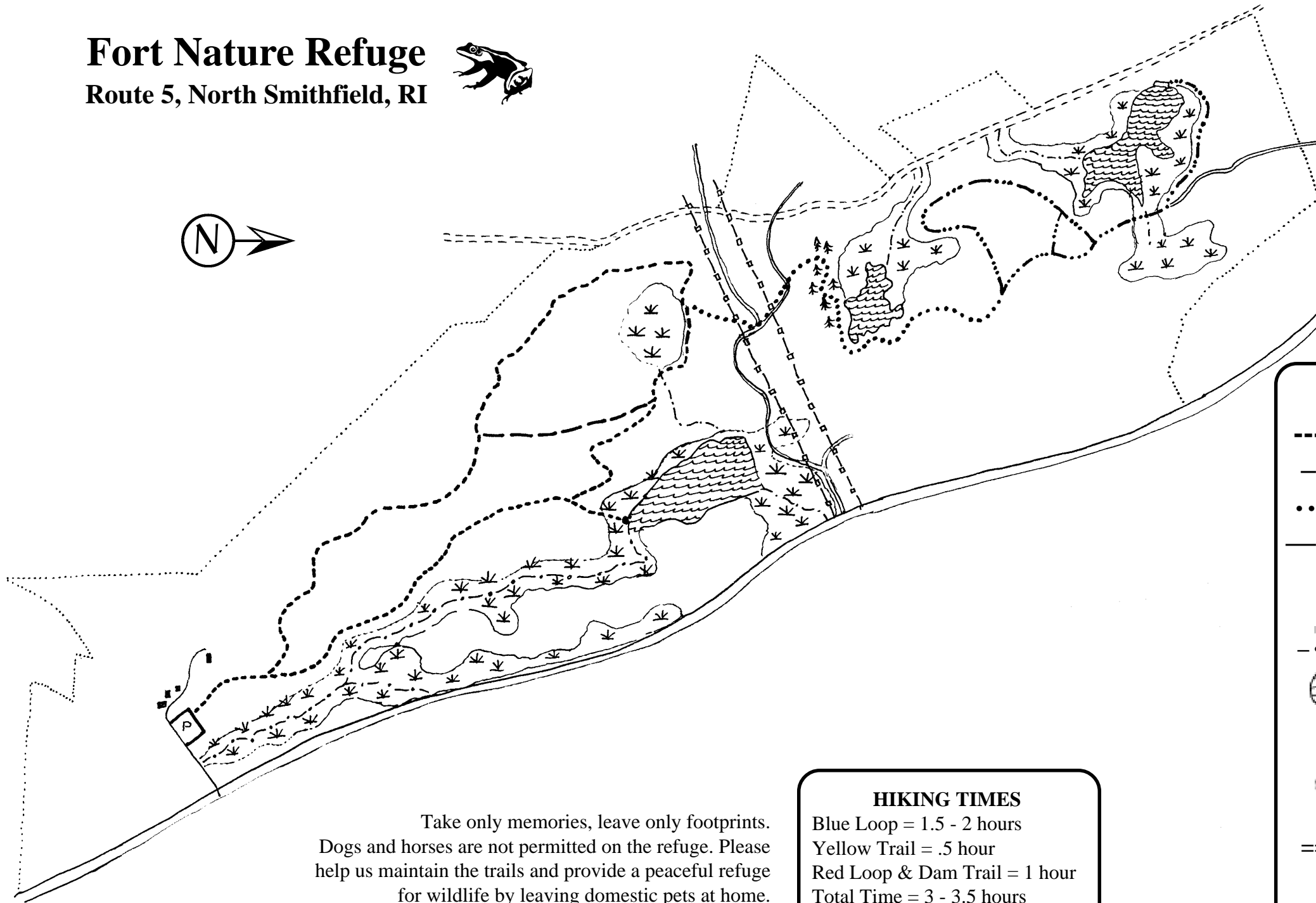
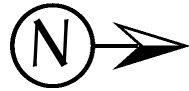


Fort Nature Refuge

Route 5, North Smithfield, RI



Take only memories, leave only footprints.
 Dogs and horses are not permitted on the refuge. Please help us maintain the trails and provide a peaceful refuge for wildlife by leaving domestic pets at home.

HIKING TIMES
 Blue Loop = 1.5 - 2 hours
 Yellow Trail = .5 hour
 Red Loop & Dam Trail = 1 hour
 Total Time = 3 - 3.5 hours

KEY	
-----	Blue Trail
- - - -	White Trail
.....	Yellow Trail
- . . . - . . .	Red Trail
■	Private residences
P	Parking
- . - . - .	Stream
⊗	Pond
*	Wetland
- - - -	Utility R. O. W.
=====	Dirt Road
🌲	Hemlocks