



Pollination Match

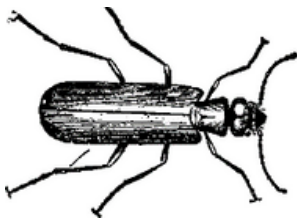
Match the animals with the flowers they pollinate

NOTE: Some animals pollinate more than one kind of flower!

Animals



Hummingbird



Beetle



Housefly



Monarch Butterfly



Honey Bee

Flowers



Magnolia



Milkweed



Clover



Skunk Cabbage



Columbine

Answers: Hummingbirds pollinate columbine; beetles pollinate magnolias; flies pollinate skunk cabbage; Butterflies pollinate clover, milkweed, & columbine