



2026 - Osprey Monitor Training

The Audubon Society of Rhode Island



**Audubon Society
of Rhode Island**



Photo by John Arnold, 2019.

Agenda

1. Osprey Natural History
2. Program Overview
3. Monitoring
 1. Collecting Observations
 2. Submitting Observations Online
 3. Nest Selection
4. Questions / Open Discussion

Natural History

- Broad habitat use
- Live 15-20 years
 - Northern Osprey that overwinter in the Southern hemisphere can fly 125,000 miles over the course of their life!
- Can get a fish in $\frac{1}{4}$ dives
- Weigh 5-8 pounds
- Can be found on 6 continents, but are the only species in its family (Pandionidae).
- Have uniquely adapted feet
 - Have a reversible fourth toe





Photo Credit: Zoe Gorman

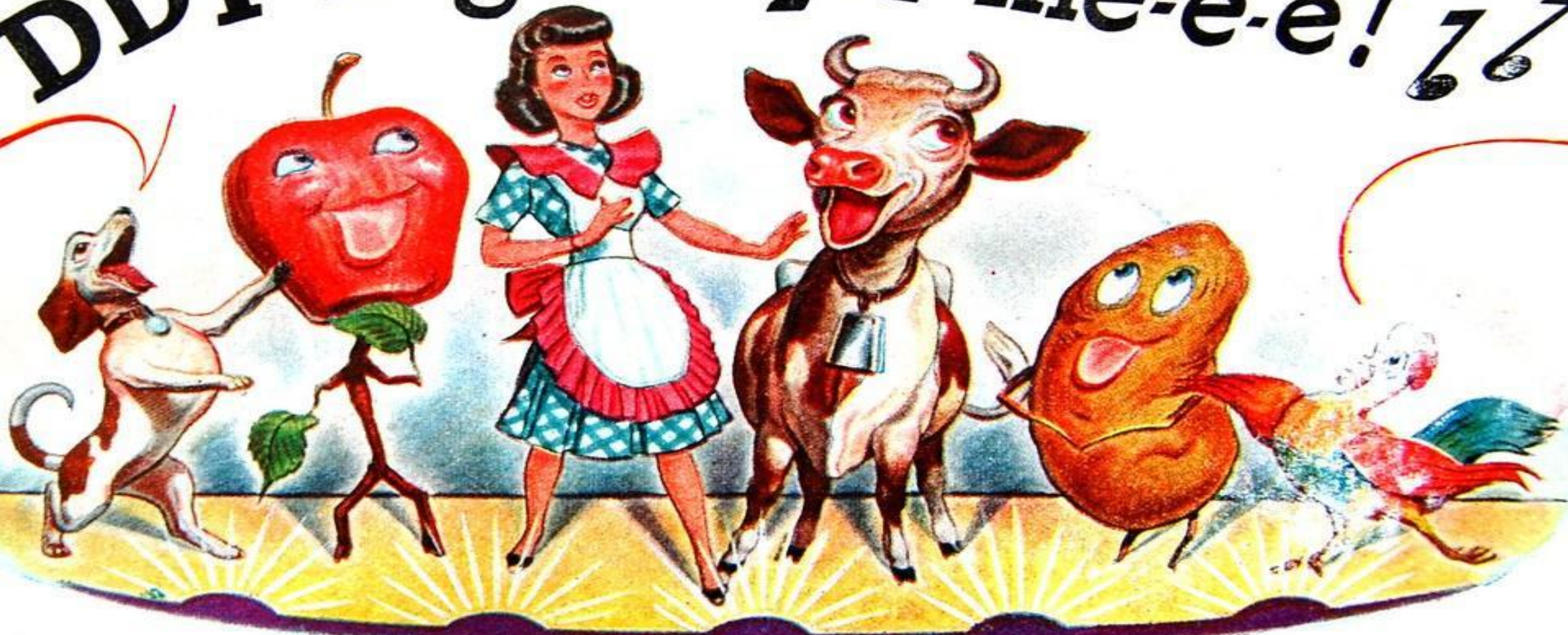


Photo Credit: Ronald Loeser

Program Overview - History

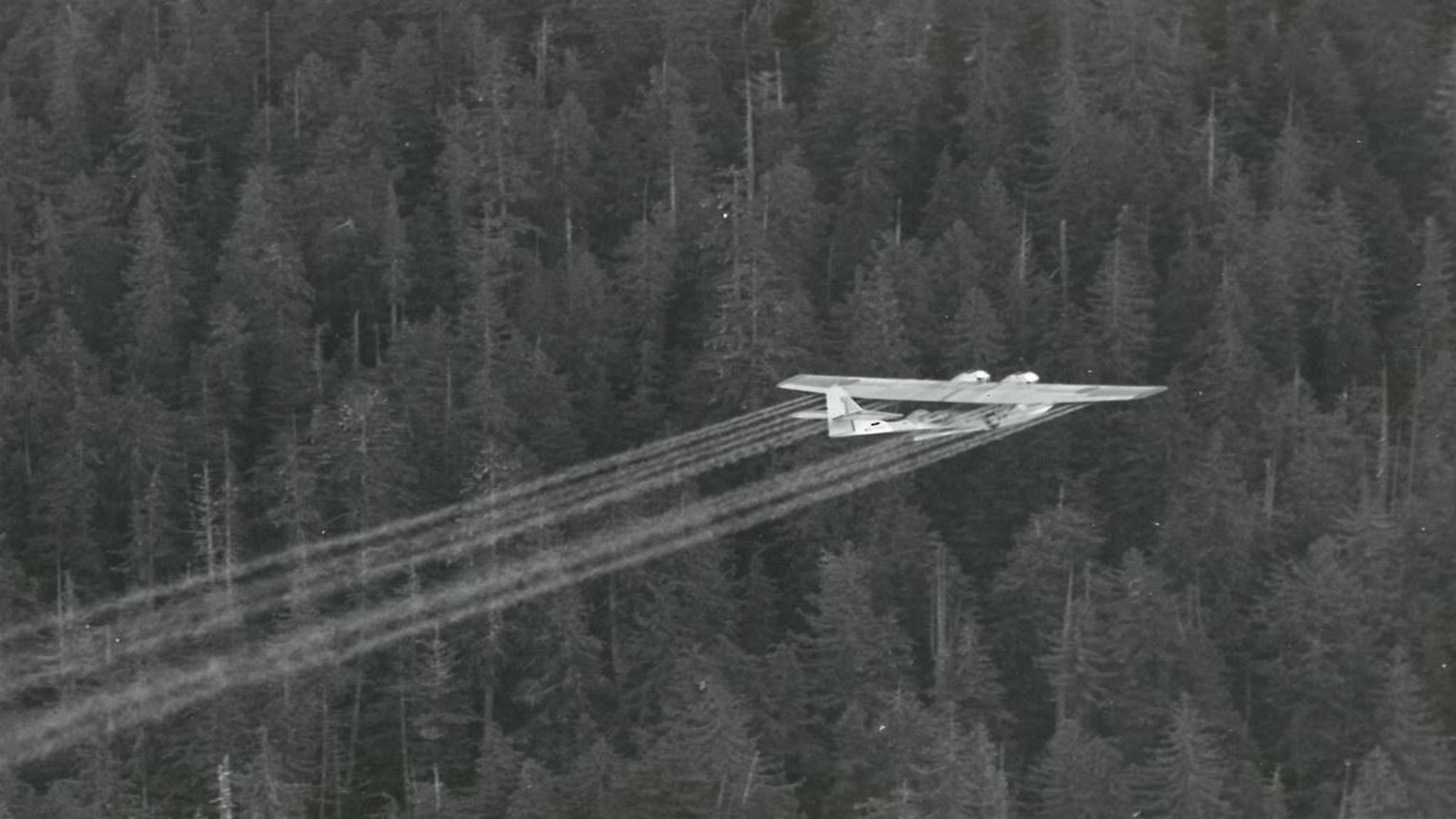
- This program was founded in 1977 by the Rhode Island Department of Environmental Management (RIDEM) . Audubon began management in 2010.
- Osprey numbers had declined across America due to DDT pollution
 - Prior to the 1940s there were 1000 nesting pairs of Osprey in Southern NE
 - Between 1940 – 1970, this number dropped to 109
 - In RI, only 13 pairs were left

"DDT is good for me-e-e!" ♪♪





CITY OF WACO
ENGINEERING & REPAIR CENTER
DDT





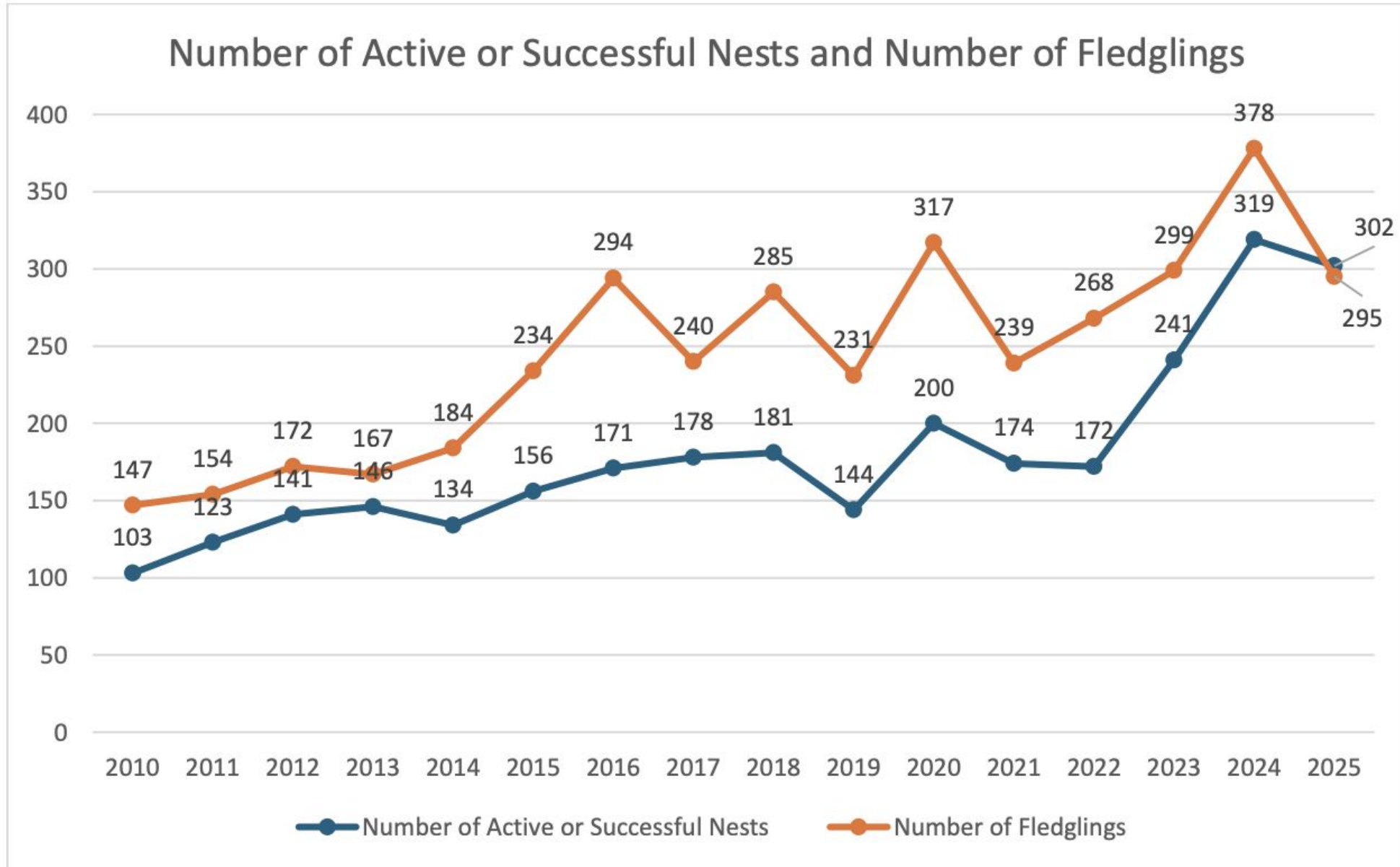
Program Overview - History

- How does DDT affect Osprey?
 - After rain events, DDT residues enter our waterways
 - Fish consume DDT through respiration, and are then consumed by Osprey
 - DDT exposure leads to eggshell thinning and poisoning
- 1976: Ospreys were added to the Endangered Species List

Good News!

- The Osprey population is growing across the country.
- Currently in Rhode Island, there are 428 Osprey nests documented

Figure 1. Trends of the number of active nests and number of fledglings from 2010-2025.



Good News!

- The Osprey population is growing across the country.
- Currently in Rhode Island, there are 428 Osprey nests documented
- Ospreys are no longer Endangered
 - Currently protected under the Migratory Bird Treaty Act

Program Overview - Goals

- Keep an active record of all Osprey nests in Rhode Island
- Document breeding success of Osprey in Rhode Island
- Be the voice of the Osprey!

Monitoring Guidelines

- Monitoring season: mid-April to mid-August
- Visit your nests at least once a week
 - At least 5-10 min per visit
- **NO DRONES**

Monitoring – Observing Activities

- Roosting / Resting



Photo by Christine Benson, 2023

Monitoring – Observing Activities

- Nest Building



Photo by Christine Benson, 2023

Monitoring – Observing Activities

- Male bringing food to female



<http://ospreys.weebly.com/index.html>

Monitoring – Observing Activities

- Copulation / Breeding



Kim Smith

Photo by Kim Smith, 2021

Monitoring – Observing Activities

- Incubation

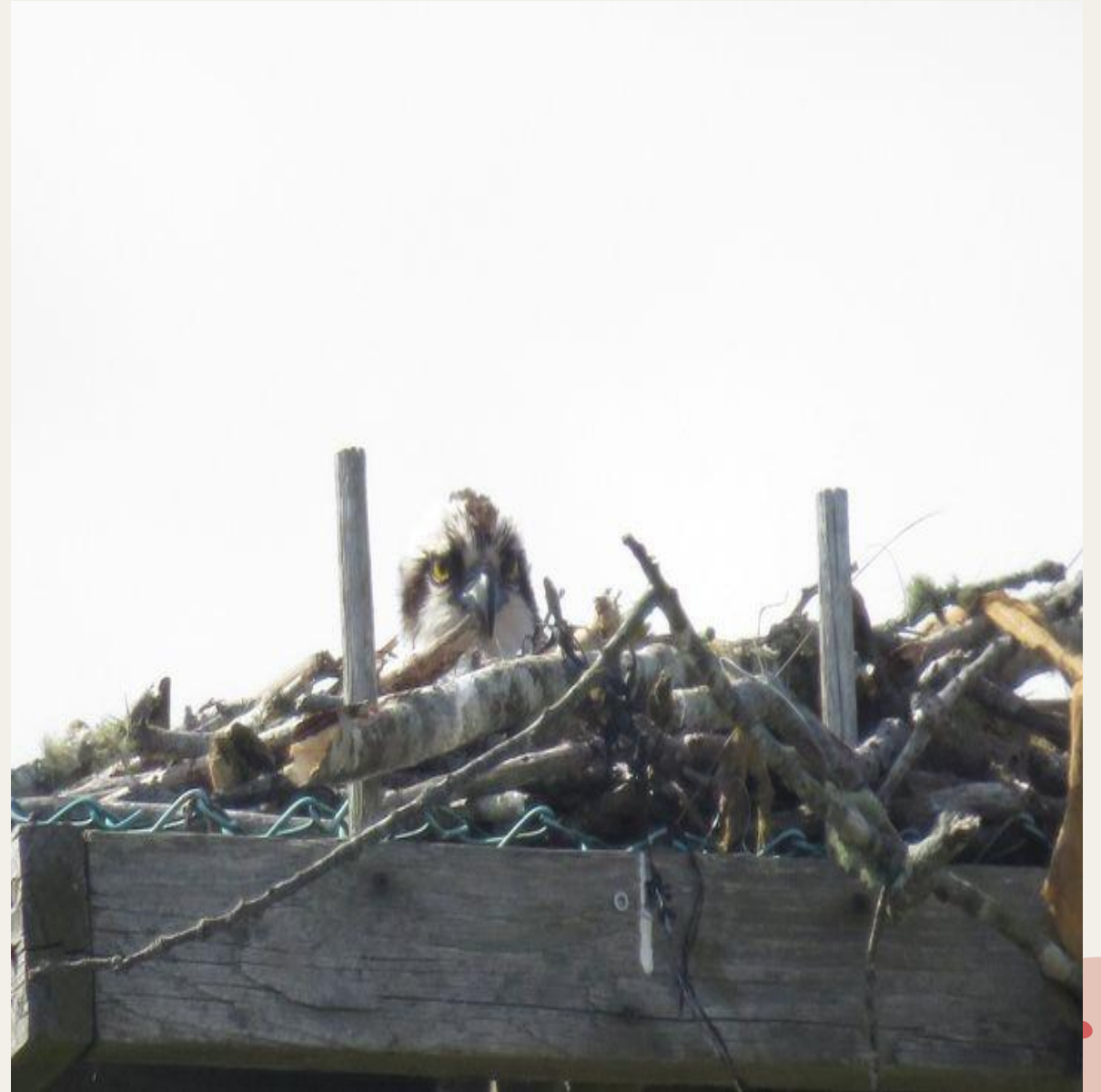


Photo by Maura Sheldon Bonafede, 2020

Monitoring – Observing Activities

- Nestlings



Photo by Jim O'Neill, 2023

Monitoring – Observing Activities

- Fledglings



Photo by Bonnie Turano, 2022



Photo Credit: Bonnie Turano



Photo Credit: Barbara Seith

Monitoring – Observing Activities

- Adult Feeding Young



<https://www.friendsofblackwater.org/osprey-facts.html>

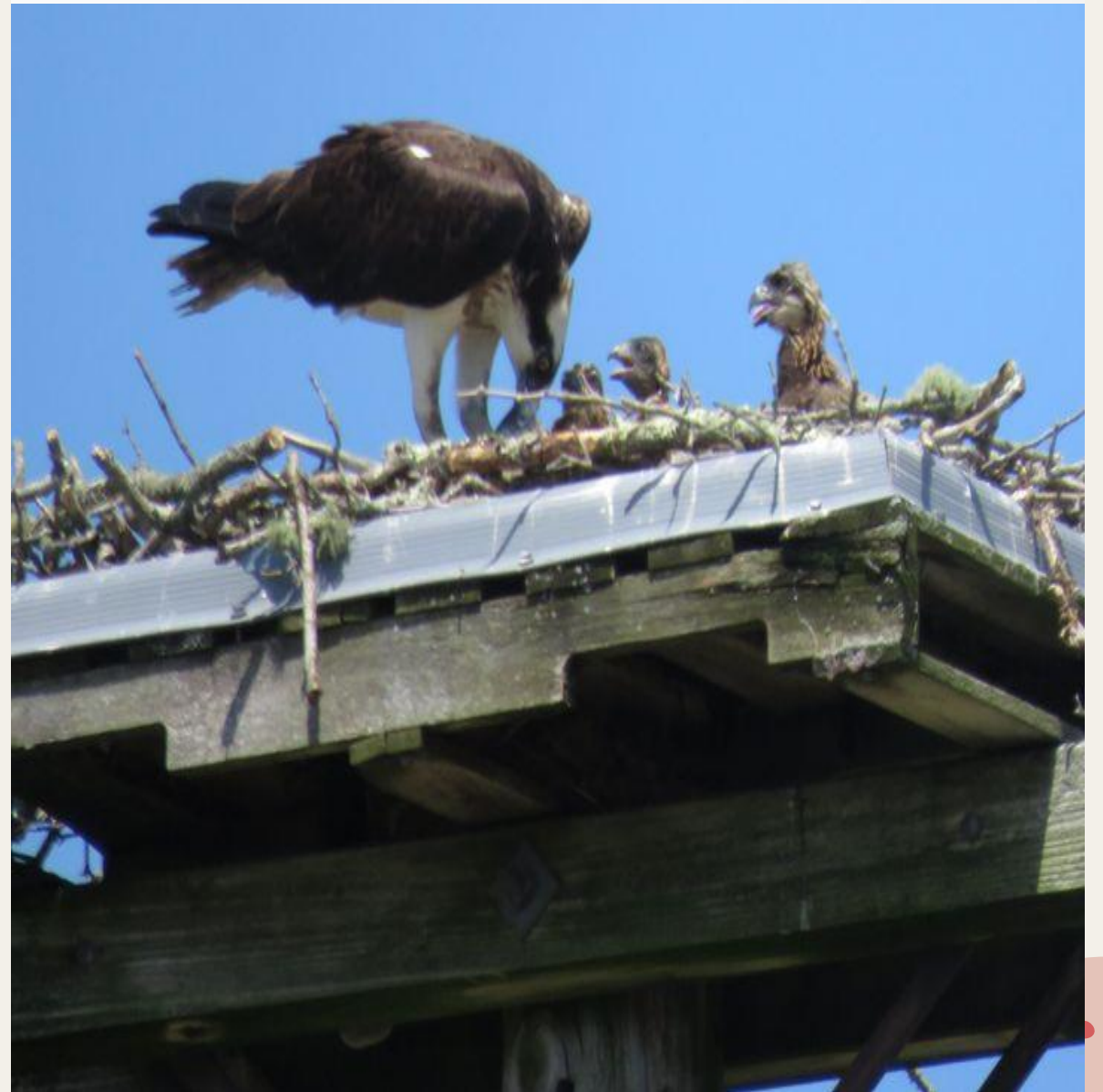


Photo by Maura Sheldon Bonafede, 2020

Submitting Nest Observations Online

- We are offering a form to submit data due to technological issues with Osprey Watch
- If you want to continue using Osprey Watch and it works for you, keep on submitting your data with the site!



SCAN ME

Osprey Nest Observation Form



Name of Observer*

! Required field

Enter your email address



Please enter data for one nest and one visit per form

Date of Observation*

<input type="text" value="MMMM DD, YYYY"/>		<input type="text" value="hh:mm aa"/>	
--	---	---------------------------------------	---

Nest Town*

Nest Name*

Observation Data

Time Spent Observing Nest*

- 5-15 minutes
- 16-30 minutes
- 31-45 minutes
- 46-60 minutes
- Over 60 minutes

Number of Nestlings Visible*

- 0
- 1
- 2
- 3
- 4
- 5

An Osprey is considered a "nestling" when it has first hatched and lacks flight feathers, is brown in color, and considerably smaller than the adults.



Number of Fledglings Visible *

0 1 2 3 4 5

A fledgling is a "grown-up" version of a nestling; these birds are still young, but are closer in size and coloration to the adults. However, fledglings often have spotted wings, unlike the sleek black wings of the adults. They also tend to have an orange-colored eye, while adults have a yellow-colored eye.



Did the ospreys engage in any breeding behaviors during this monitoring session? If yes, select which ones. If no, select "No breeding behaviors observed"*

Resting/Roosting



Nest Building



Male Bringing Food to Female



Copulation/Breeding



Additional Observation Details

Submit Form

Monitoring – Nest Selection





audubon osprey program

AI Mode All Images Videos Shopping Forums Short videos More Tools



Audubon Society of Rhode Island

<https://asri.org> › [osprey](#) › [about](#)

Audubon RI's Osprey Monitoring Program

Our program **collects data on over 360 Osprey nests** across the state of Rhode Island with a team of over 100 volunteers.



Audubon Society
of Rhode Island

Hike Learn Take Action Membership Donate

SEARCH



Stan Chamberlain

Osprey Monitoring Program

Welcome to the Audubon Society of Rhode Island's Osprey Nest Monitoring Program!

Our goal is to collect data on all of the Osprey nests in the state each summer to understand the changes in the abundance and distribution of nests and the number of young Ospreys that hatch each year.

Our program was started by the Rhode Island Department of Environmental Management (RIDEM) in 1977 when there were only 13 Osprey nests in Rhode Island due to the harmful impacts of DDT on these magnificent birds.

In 2010, the program was passed to Audubon because of our amazing team of volunteers! Today, our program collects data on over 360 nests across the state with a team of over 100 volunteers.

That said, we can always use the help of more monitors! If you are interested in being part of our program, please reach out to Osprey@asri.org.

Below are some links to additional resources that you can visit to learn more about Osprey and the Osprey Monitoring Program!

Osprey Monitoring Resources

[RI Osprey Nest Sites Map](#)

View the locations of over 360 Osprey nests monitored by the Audubon Society of Rhode Island volunteers!

For resources, information, and PDFs that you may need as a monitor, please click the buttons below.



RI Osprey Nest Sites W.ALL DIRECTIONS

.XLSX

File Edit View Insert Format Data Tools Help



🔍
↶
↷
🖨
🔍
75%
🇺🇸
%
0.00
123
Calibri
-
12
+
B
I
↺
A
🎨
🏠
🔗
☰
⏴
⏵
🔍
🔗
+
📊
🔍
📄
Σ

H112

	A	B	C	D	E	F	G	H	I	J
1	Salt Pond Plaza							Volunteer 1		
2	Nest Name	LAT	LONG	Town	Location	Directions	Structure	Last name	First name	email
110	138 Maxson Hill Rd (NEW 2024)	41.4423407)	(-71.777864	Hopkinton	Nest is on utility pole across from home. As of 5/1/2024	Nest is on utility pole across from home. As of 5/1/2024 nest was not rebuilt after removal in mid-April.	Utility Pole			
111	Main St (NEW 2024) (Removed as of 5/9/24)	41.4388353)	(-71.7865046	Hopkinton		pull off onto side of road and observe from breakdown lane. *NOTE: LOCATION IS APPROXIMATE*	Telephone pole.			
112	Dutch Island Lighthouse	41.4967306)	(-71.4042985	Jamestown	On top of lighthouse	Boat to Dutch Island	Lighthouse			
113	Jamestown South Pond	41.5115028)	(-71.382865	Jamestown	SW of South Pond	Take trail system behind Jamestown Public Works Building to this location. There is room for about 3 cars in the public trail lot there. Do not take the road opposite of Weeden Lane it is private property.	Platform on pole			
114	Marsh Meadows	41.509672)	(-71.3741881	Jamestown	Marsh Meadows Preserve	Observe from Zeek's Creek Bait & Tackle parking lot or from online livestream.	Nest platform			
115	Boyer (Formerly Palmieri) - PRIVATE	41.4686383)	(-71.394365	Jamestown	Audubon Monitors will coordinate with Chris Powell of the Conanicut Island Raptor Program to monitor nests on Private Property in Jamestown.		Pole			
116	O'Farrell Farm	41.4862129)	(-71.3910391	Jamestown	In field at Farm	South of Fort Getty Road	Platform on pole			
117	Petri Nest (Formerly Fox Hill Salt Marsh)	41.4870141)	(-71.3973258	Jamestown		West end of Fort Getty Road				
118	Mackerel Cove	41.4891926)	(-71.3842043	Jamestown	Across from Mackerel Cove Beach.	North Road south to Southwest Avenue to Beavertail Road	Utility pole with disc			
119	Great Creek (formerly Zeek's Creek)	41.5061145)	(-71.3747225	Jamestown	edge of road	North Road at Zekes Creek	Telephone Pole			
120	Jamestown Conservation Area	41.5086397)	(-71.3654994	Jamestown	Jamestown Exit off Rt. 138		Disc above wires on utility pole			

Monitoring – Submitting New Nests

- Email me and Sarah the location of new nests
- Include photos in email

Questions / Open Discussion

